



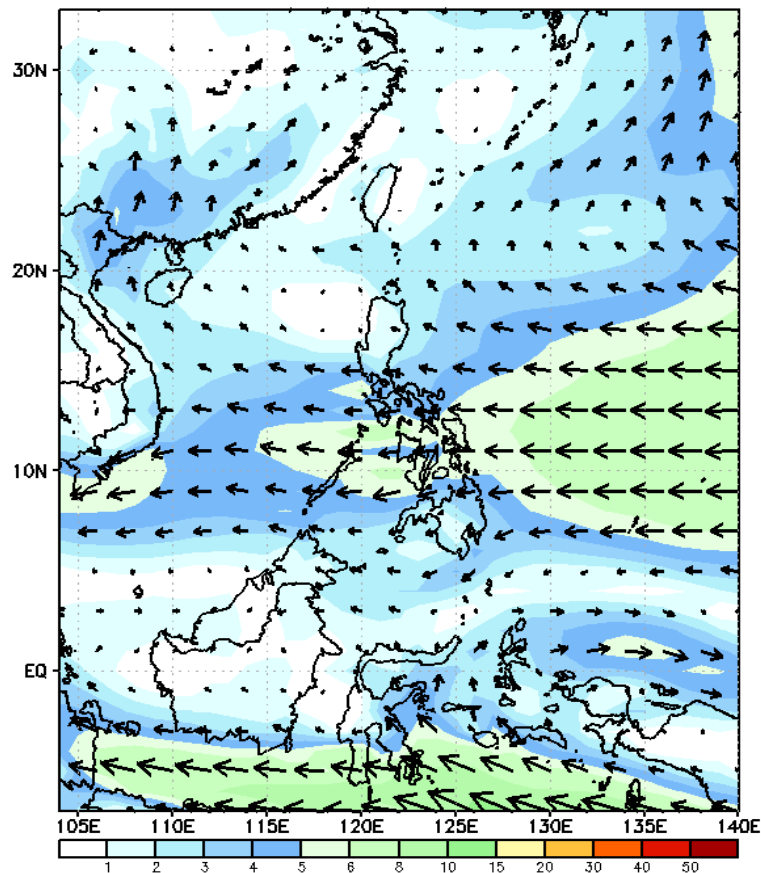
# Week 1 & Week 2 Forecast for the Philippines using GEFS Model



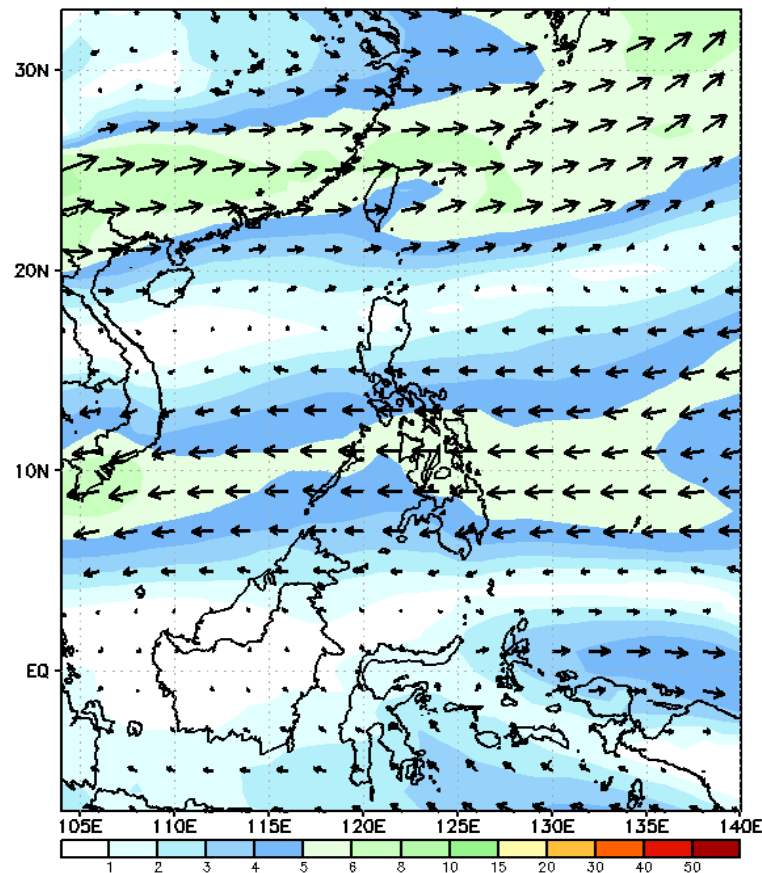
# GEFS Week-1 Wind Forecasts:

Week 1: May 10-16, 2024

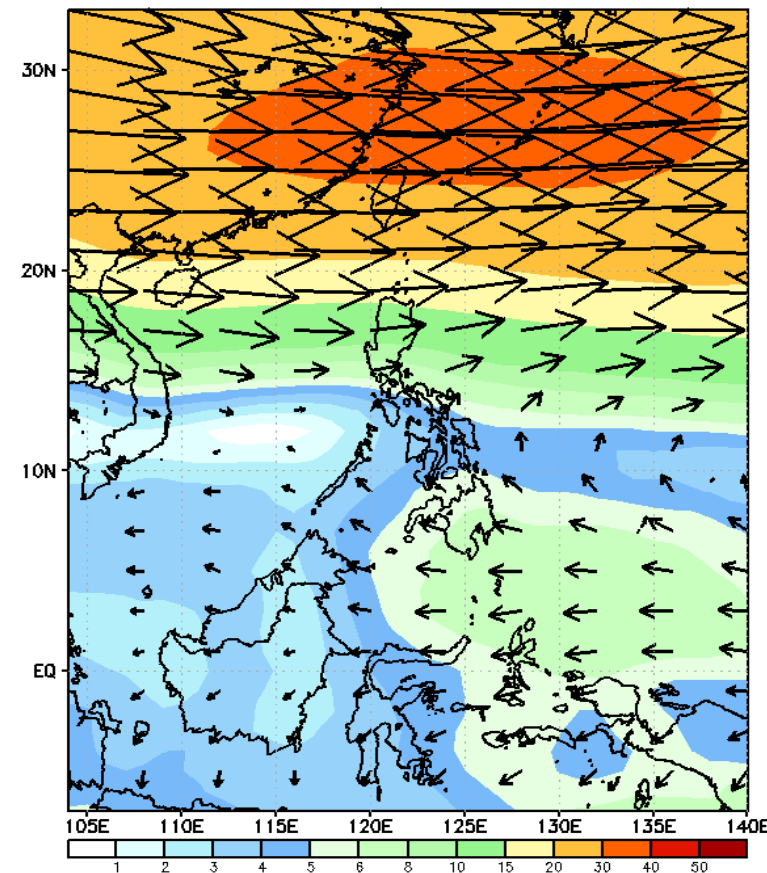
GEFS Week-1 850-hPa Wind Total  
Valid: 20240510 - 20240516



GEFS Week-1 700-hPa Wind Total  
Valid: 20240510 - 20240516

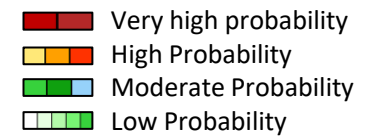


GEFS Week-1 200-hPa Wind Total  
Valid: 20240510 - 20240516



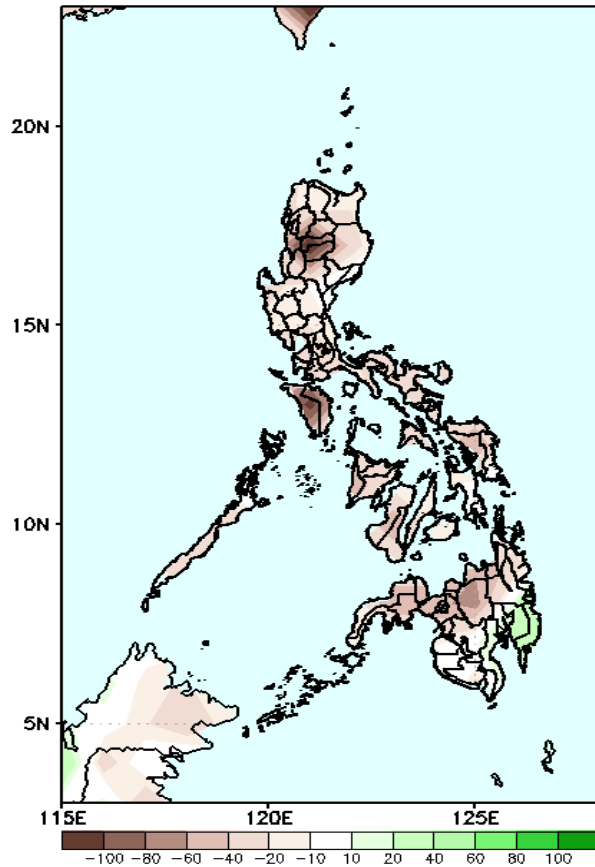
Easterlies continuously affect most parts of the country. Expect dry and warm days during the forecast period.

# Precipitation Anomaly and Exceedance Probability > 25/50 mm

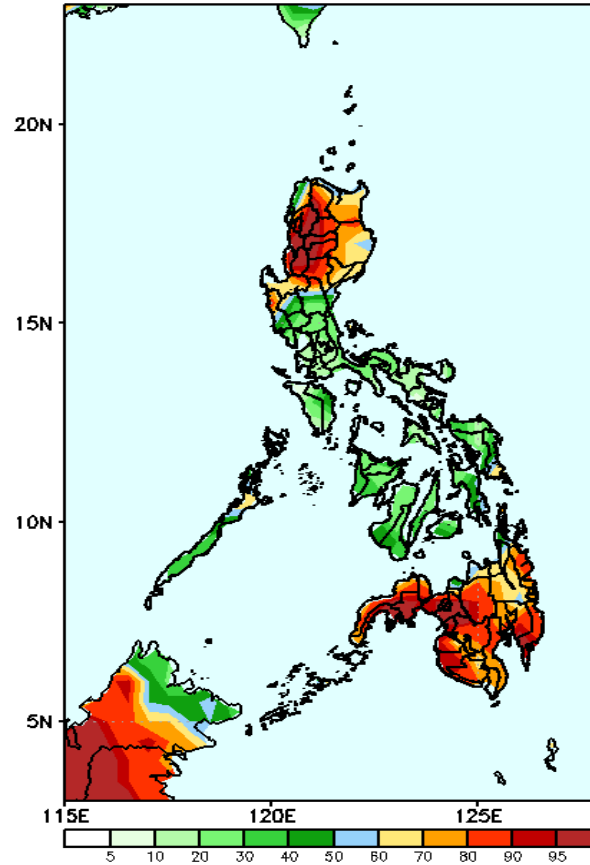


Week 1: May 10-16, 2024

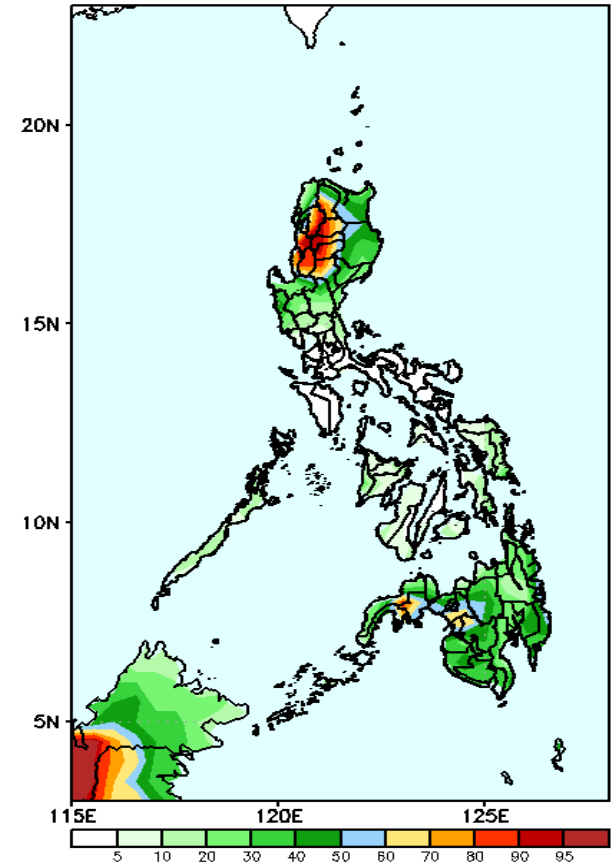
GEFS Week-1 Precip Anomaly  
Valid: 20240510 - 20240516



GEFS Week-1 Exceedance Prob. > 25mm  
Valid: 20240510 - 20240516



GEFS Week-1 Exceedance Prob. > 50mm  
Valid: 20240510 - 20240516



Rainfall deficit of 40-100mm is expected in CAR and Mindoro; 20-80mm for the rest of the country

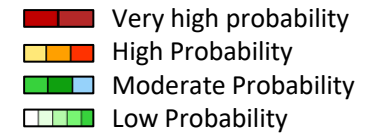
### Probability to Exceed 25mm

- High to very high over most parts of northern Luzon and Mindanao;
- Moderate to high over the rest of the country.

### Probability to Exceed 50mm

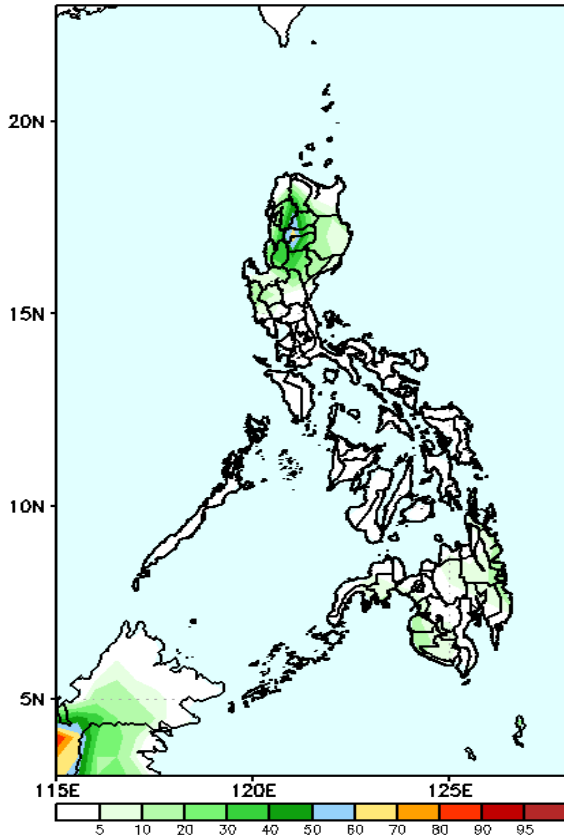
- Moderate to high over CAR, Nueva Vizcaya, La Union, and Western Mindanao;
- Low to moderate over the rest of the country.

# Exceedance Probability > 100/150/200 mm



## Week 1: May 10-16, 2024

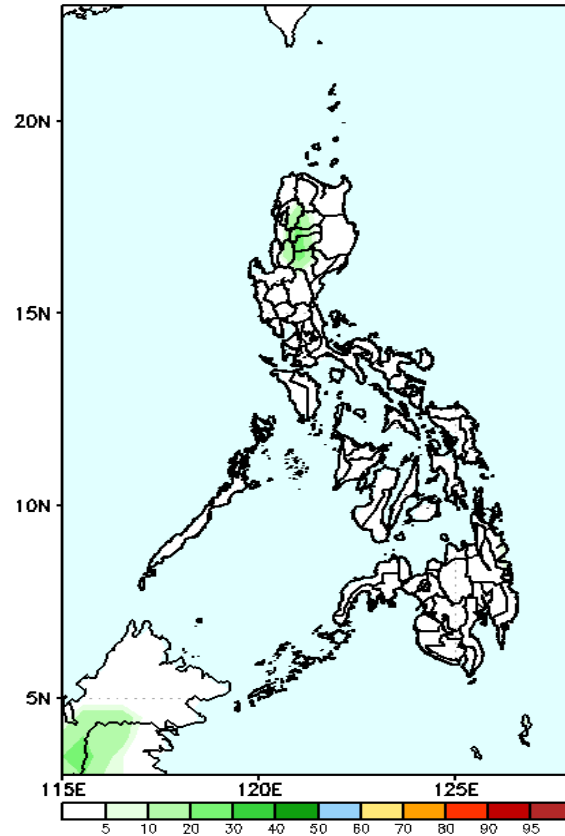
GEFS Week-1 Exceedance Prob. > 100mm  
Valid: 20240510 - 20240516



### Probability to Exceed 100mm

- Moderate to high in some parts of CAR;
- Low to moderate over the rest of the country.

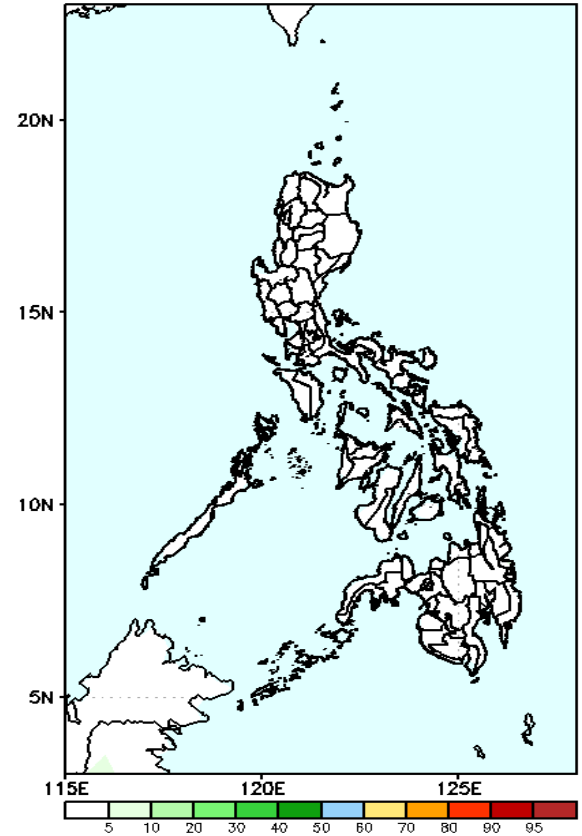
GEFS Week-1 Exceedance Prob. > 150mm  
Valid: 20240510 - 20240516



### Probability to Exceed 150mm

- Low across the country.

GEFS Week-1 Exceedance Prob. > 200mm  
Valid: 20240510 - 20240516



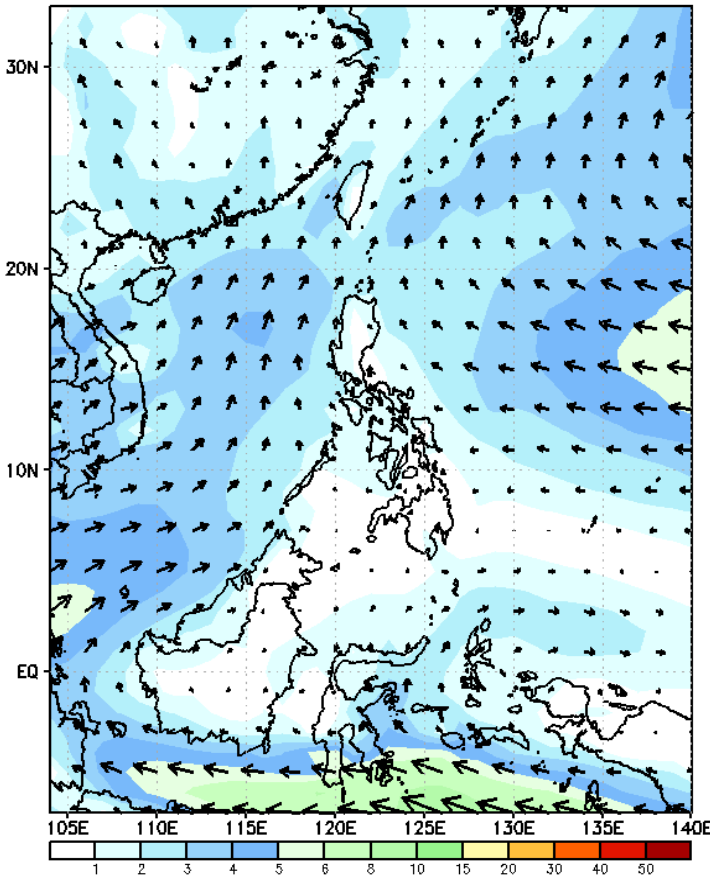
### Probability to Exceed 200mm

- Low across the country.

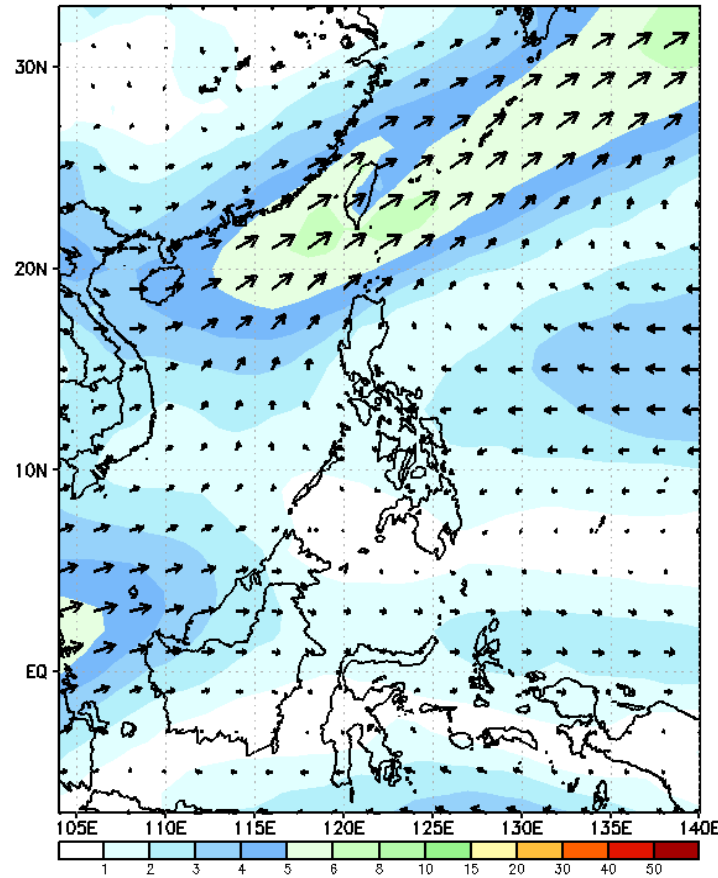
# GEFS Week-2 Wind Forecasts:

Week 2: May 17-23, 2024

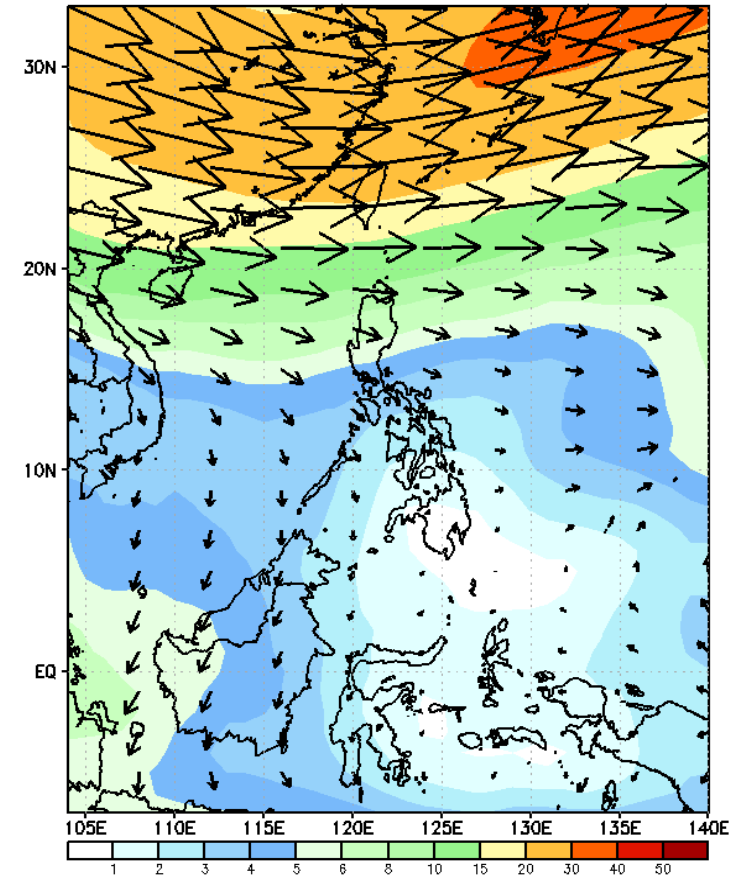
GEFS Week-2 850-hPa Wind Total  
Valid: 20240517 - 20240523



GEFS Week-2 700-hPa Wind Total  
Valid: 20240517 - 20240523

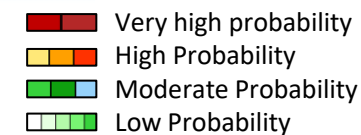


GEFS Week-2 200-hPa Wind Total  
Valid: 20240517 - 20240523



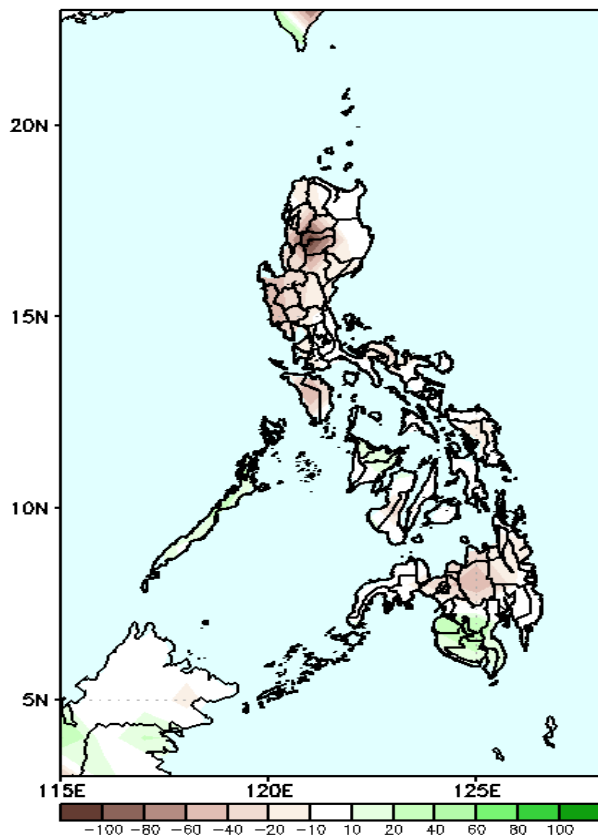
Southwest windflow will likely affect some areas in Palawan. Easterlies will likely prevail in most parts of the country. Expect dry and warm days during the forecast period.

# Precipitation Anomaly and Exceedance Probability > 25/50 mm

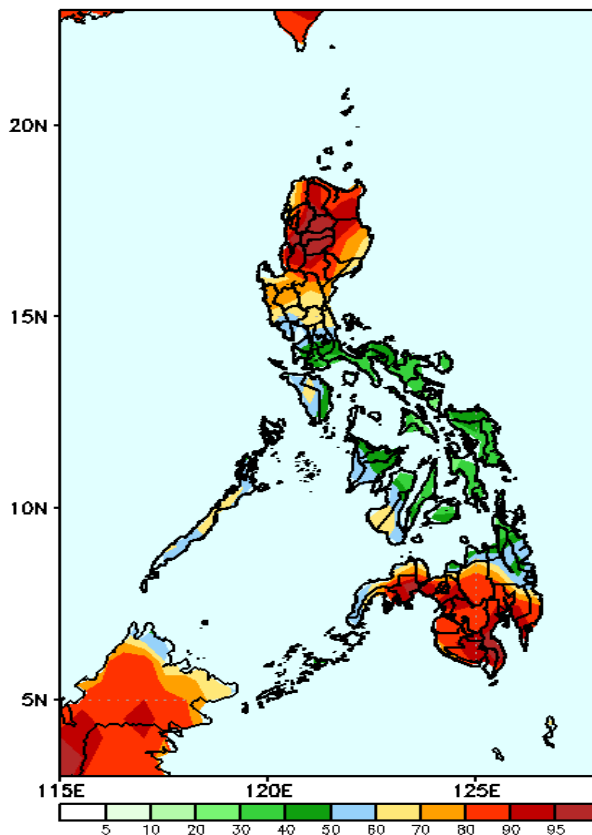


## Week 2: May 17-23, 2024

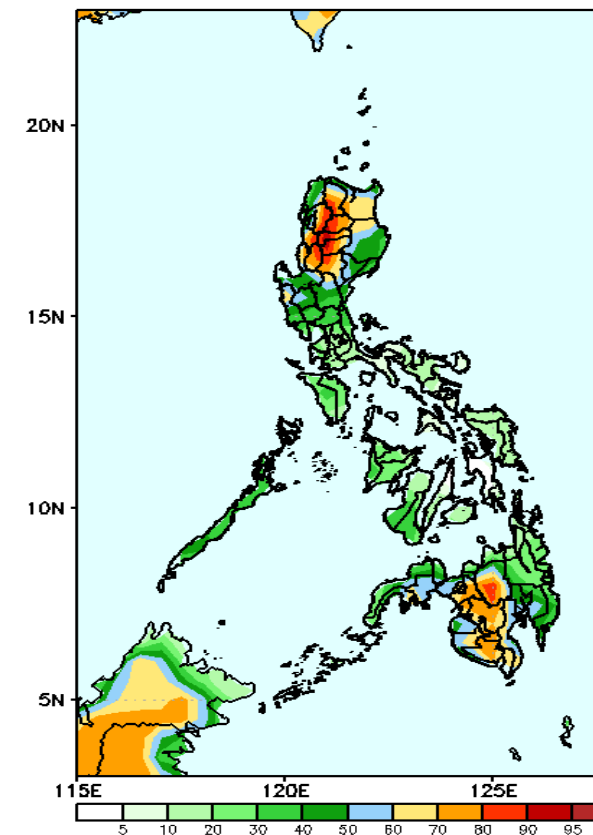
GEFS Week-2 Precip Anomaly  
Valid: 20240517 - 20240523



GEFS Week-2 Exceedance Prob. > 25mm  
Valid: 20240517 - 20240523



GEFS Week-2 Exceedance Prob. > 50mm  
Valid: 20240517 - 20240523



Rainfall deficit of 20-80mm is expected in most parts of the country except in southwestern Mindanao where 20 – 50mm increase in rainfall is likely.

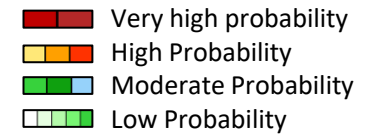
### Probability to Exceed 25mm

- High to very high over northern Luzon and central Mindanao;
- Moderate to high over the rest of the country.

### Probability to Exceed 50mm

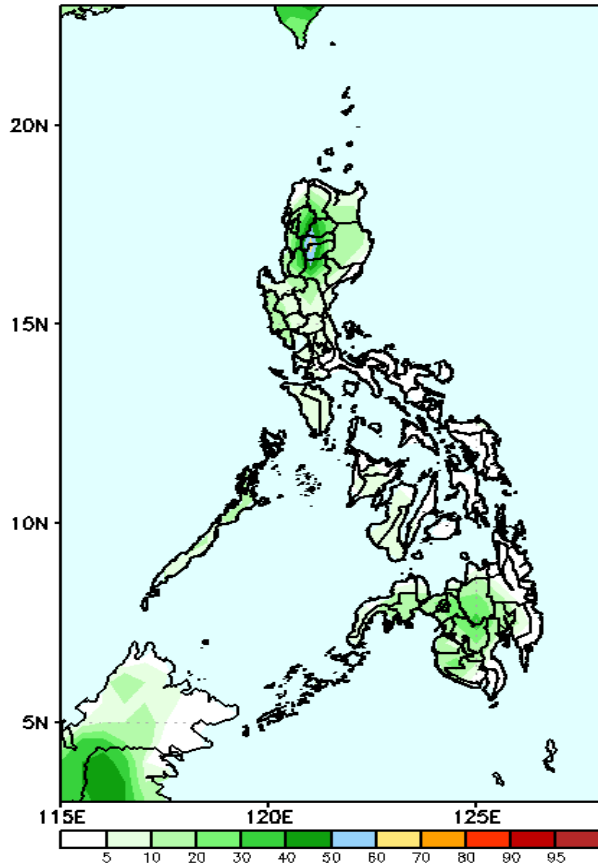
- Moderate to high over most of northern Luzon, western and central Mindanao.
- Low to moderate over the rest of the country.

# Exceedance Probability > 100/150/200 mm



## Week 2: May 17-23, 2024

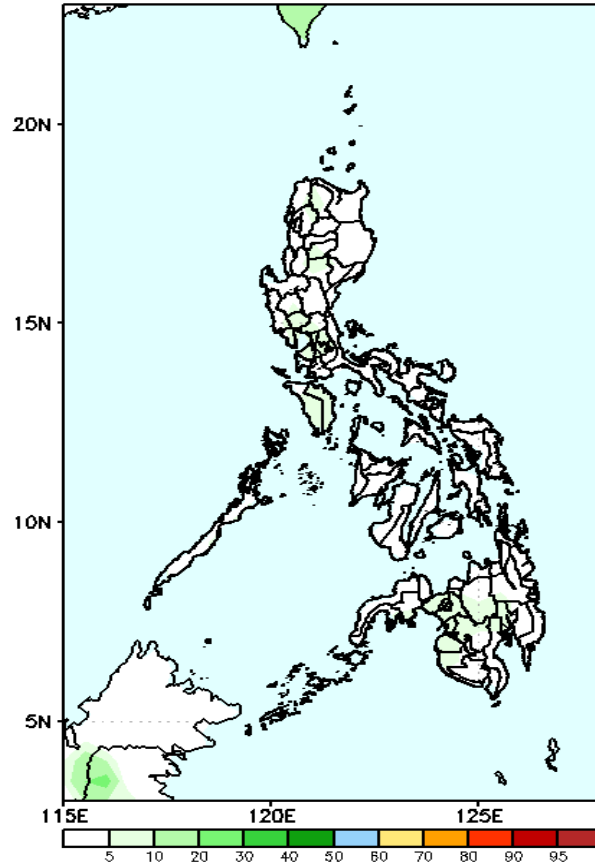
GEFS Week-2 Exceedance Prob. > 100mm  
Valid: 20240517 - 20240523



### Probability to Exceed 100mm

- Low to moderate over Luzon;
- Low over the rest of the country.

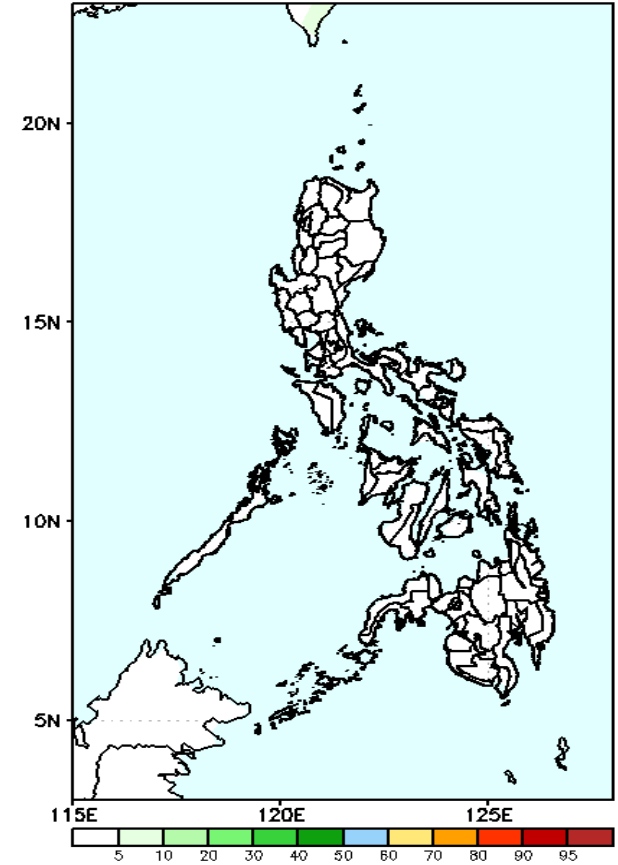
GEFS Week-2 Exceedance Prob. > 150mm  
Valid: 20240517 - 20240523



### Probability to Exceed 150mm

- Low across the country.

GEFS Week-2 Exceedance Prob. > 200mm  
Valid: 20240517 - 20240523

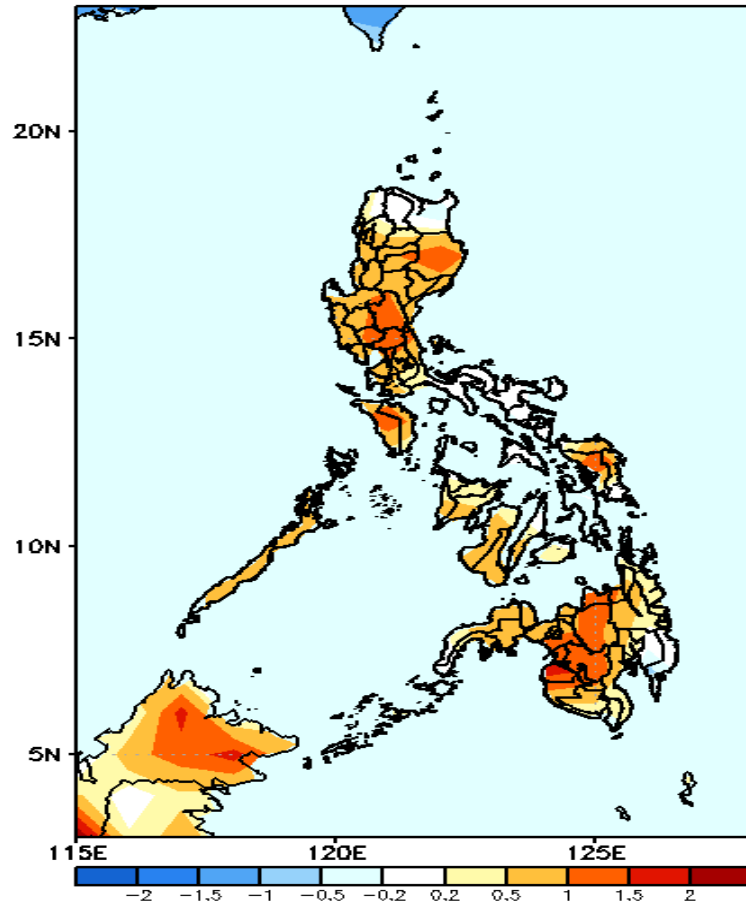


### Probability to Exceed 200mm

- Low across the country.

# GEFS Week-1 & 2 Forecasts: T2m Anomaly

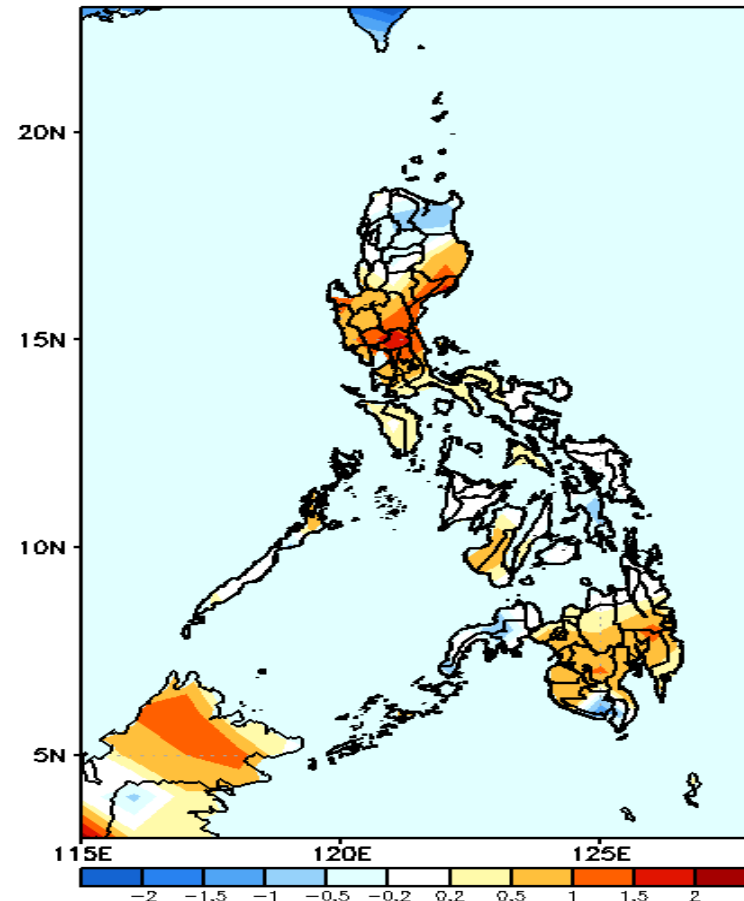
GEFS Week-1 T2m Anomaly  
Valid: 20240510 - 20240516



## 2m Temperature Week 1: May 10-16, 2024

Slightly warmer to warmer than average surface air temperature will likely be experienced in most parts of the country.

GEFS Week-2 T2m Anomaly  
Valid: 20240517 - 20240523



## 2m Temperature Week 2: May 17-23, 2024

Slightly warmer to warmer than average surface air temperature will likely be experienced in most parts of Luzon, Negros island and Mindanao while some areas in northern Luzon, the rest of Visayas, South Cotabato and Zamboanga Peninsula will likely have near to slightly cooler than average surface temperature.